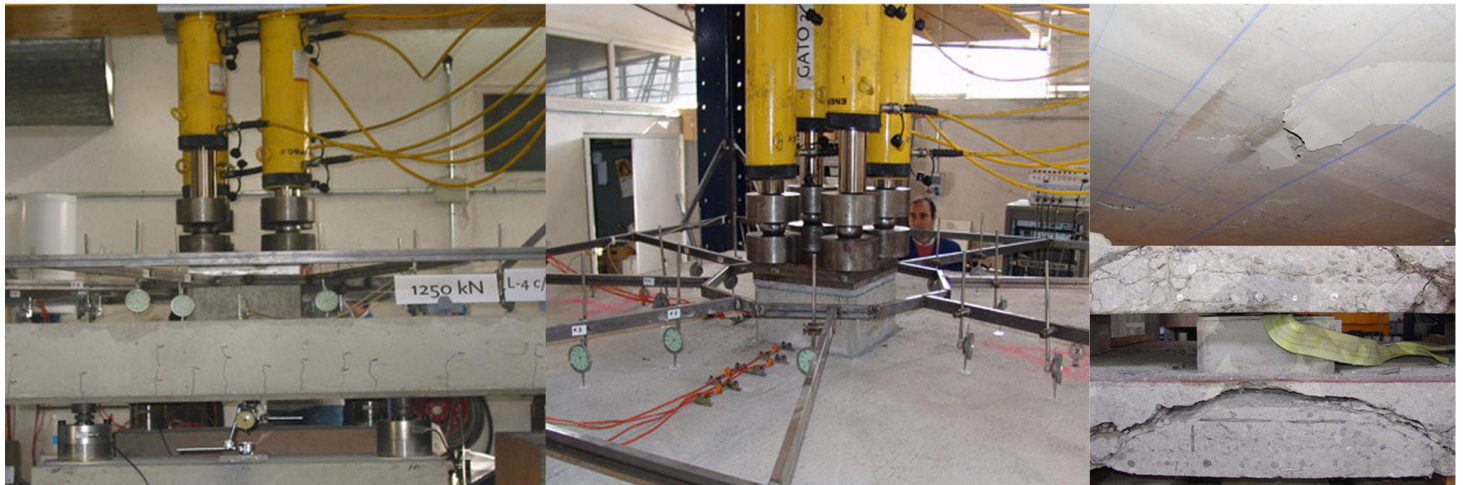


# Study on punching detailing

/ 2008

Owner

FHECOR, Universidad Politécnica de Madrid y con la colaboración de Detecsa



At the request of the Barcelona Airport UTE Processor, with the participation of the Polytechnic University of Madrid and with the collaboration of DETECSA, FHECOR Consulting Engineers has carried out an experimental study on the punching resistance of flat slabs with different types of reinforcement detailing, including typologies which are commonly used in practice where there is no physical connection between the punching reinforcement and the tensile bending reinforcement, or in which the bending reinforcement does not cross the support but is cut and reinforced laterally.



**FHECOR**

C/ Barquillo 23, 2º | 28004 Madrid | España  
T. (+34) 917 014 460 | F. (+34) 915 327 864  
[www.fhecor.com](http://www.fhecor.com) | [fhecor@fhecor.es](mailto:fhecor@fhecor.es)